

THIS ADDITION TO A ONE-ROOM CHRISTIAN HOME SCHOOL WAS USED UNTIL 1947.



Schoolhouse Museum, 2007

This building was moved to its present location on Main Street in Smithfield, Virginia in 2005, and renovated with funds from the Town of Smithfield, Isle of Wight County, corporate partnerships, and the community.

The Schoolhouse Museum officially opened May 19, 2007. It was the Town of Smithfield's project to commemorate the 400th anniversary of the founding of Jamestown.

The Museum is operated by a site coordinator and governed by a volunteer Board of Directors.

With a growing collection of authentic artifacts, there is no better place to learn about the history of African-American education in Isle of Wight County, Virginia in the first half of the 20th century.



Museum Hours

Wednesday - Saturday
Noon to 4:00 p.m.

Sunday
1:00 p.m. to 5:00 p.m.

Other times
By appointment

FREE ADMISSION

Interested in finding out more about education in Isle of Wight County during the first half of the 20th century? Visit our website at www.theschoolhousemuseum.com

Telephone
757-365-4789

Email

theschoolhousemuseum@verizon.net

THE SCHOOLHOUSE
MUSEUM
SMITHFIELD, VIRGINIA



A Look To The Past At Education For African-Americans In Isle of Wight County From 1900 - 1969

THE

A History Museum Of Public Education
For African- Americans In Isle Of
Wight County In The First Half Of
The 20th Century

Compare and contrast today's classrooms with that of a one- two- or three-room school in IOW County.

Develop an understanding and appreciation of education for African- Americans during the first half of the 20th Century.

LEARN:

What it was like to attend a one- two- or three-room school in the early 1900's

What facilities and supplies were available to students

The typical class routine

About the life and responsibilities of a student

Where students got their drinking water and food for lunch.

SCHOOLHOUSE





REAL ARTIFACTS.

REAL STORIES.



Our narrated tour will take you on a journey...

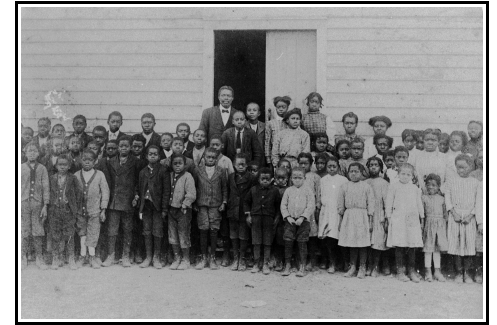
DISCOVER:

-  How and what students were taught
-  The books students read
-  The games students played
-  Artifacts used in a typical African-American one- two- or three-room school

MUSEUM

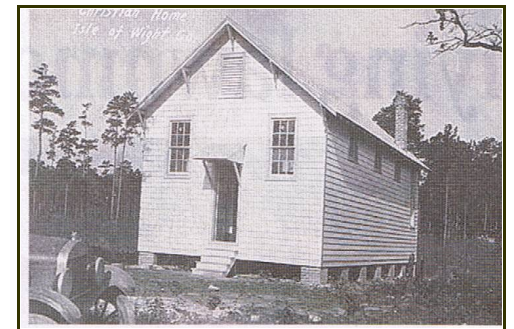
IMAGINE BEING A STUDENT

THEN.



George Gwaltney, with his class, in front of the school he built near Windsor, circa 1880

When you visit the Schoolhouse Museum, you will discover what it was like to be a student in the early 20th century. You aren't just a spectator of the past, but a participant, getting a glimpse of education provided to African- Americans in the early 1900's.



Christian Home School, built 1924
Picture from the Library of Virginia Archives